

SUPPORTED BY



Dairy
Australia
Your Levy
at Work



Dairy for life



WHERE TO GET MORE PROOF OF RESULTS

The Economic Benefits of Native
Shelterbelts Report - (EBONS Report)
free download from
www.basalttobay.org.au

NOTES

MORE PROFIT SERIES
other guides available:
Dairy, Sheep & Wool, Crops & Pasture
and All AG Risk Reduction

Published by the Basalt to Bay Landcare
Network, Koroit, November 2016

© The Basalt to Bay Landcare Network Inc,
2016

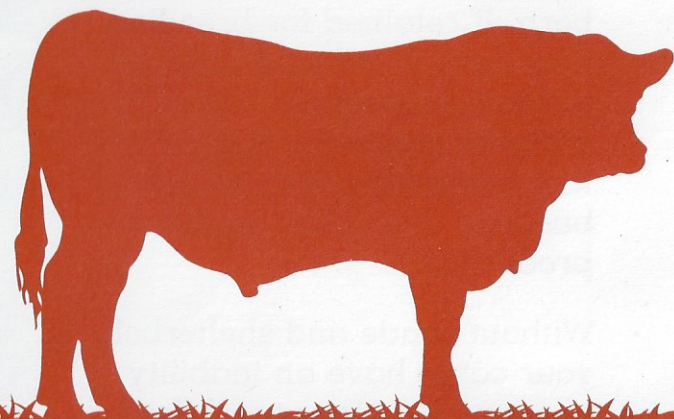
This publication is copyright. No part may
be reproduced by any process except
in accordance with the provisions of the
Copyright Act 1968.

Authorised by the Basalt to Bay Landcare
Network Inc, P. O. Box 5465, Warrnambool,
Victoria 3280 Australia.

Disclaimer

This publication may be of assistance to
you but the Basalt to Bay Landcare Network
and its employees do not guarantee that
the publication is without flaw of any kind
or is wholly appropriate for your particular
purposes and therefore disclaims all liability
for any error, loss or other consequence which
may arise from you relying on any information
in this publication.

MORE PROFIT



CATTLE

Using Landcare Methods

WITHOUT SHADE & SHELTER BELTS USING NATIVE PLANTS

- Heat stress in heifers during pregnancy results in calves that are slower to gain weight, that have a smaller carcass, and that have reduced udder capacity for their entire life. This is regardless of the feed the calf receives once born. If retained for breeding they have a reduced capacity to grow subsequent calves to a higher standard. It is a cycle that limits the ability of the business that relies on the cows' production to grow.
- Without shade and shelterbelts, your cattle have an inability to express their natural desire to avoid hot and cold. Without this ability they put energy into coping with heat and cold that they would otherwise put into growing themselves and their offspring.
- Heat stress reduces sire fertility.

WITH SHADE & SHELTER BELTS USING NATIVE PLANTS

- Cattle gain more weight per unit of feed if they are sheltered from heat and cold.
- Sheltered cattle experience fewer weather related abortions and produce more viable sperm.
- Shelterbelts can prevent direct stock contact and reduce the spread of disease and parasites between mobs.
- Shelterbelts increase the options a property has to manage the impacts of weather - so that when the temperature soars or plummets - you are not left with no choice but to watch your livestock profits slide during that event and for the weeks after while the stock recover.
- Shelterbelts along boundaries increase property privacy.

WHO CAN GIVE ME MORE ADVICE ON PLANTING SHADE & SHELTER BELTS?

- Basalt to Bay Landcare Network
info line - 0408 712 713
basalttobay@gmail.com
- Australian Wool Innovation (AWI)
- Australian Government -
Department of Agriculture
- Bega Cheese
- Dairy Australia
- Fonterra
- Glenelg Hopkins CMA
- Landcare Australia
- Meat & Livestock Australia (MLA)
- Midfield Group
- Murray Goulburn Co-op
- Otway Agroforestry Network
- Victorian Farmers Fed (VFF)
- Warrnambool Cheese & Butter
Factory
- Westvic Dairy
- Victorian Landcare Gateway
www.landcarevic.org.au

